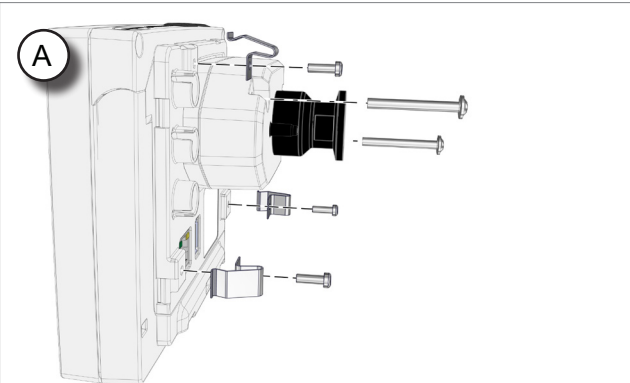
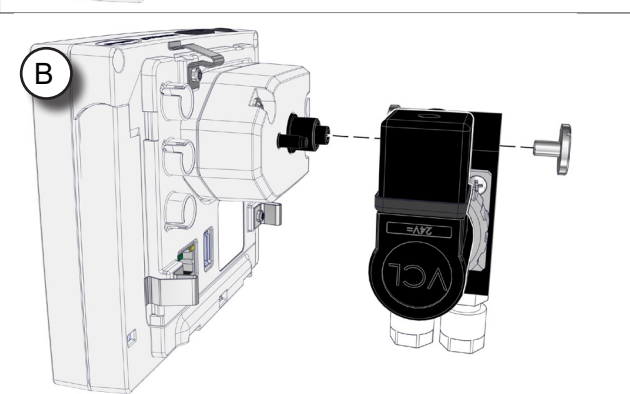
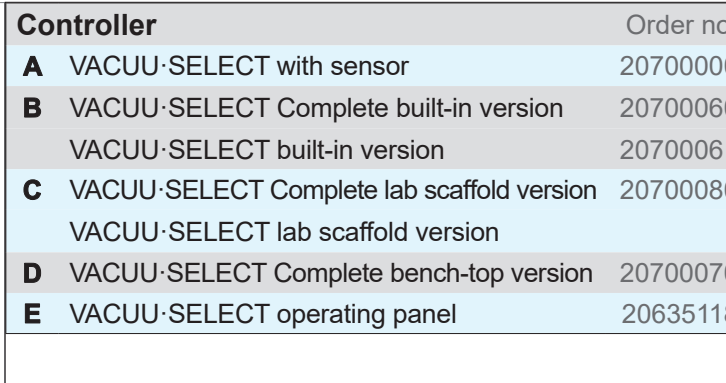
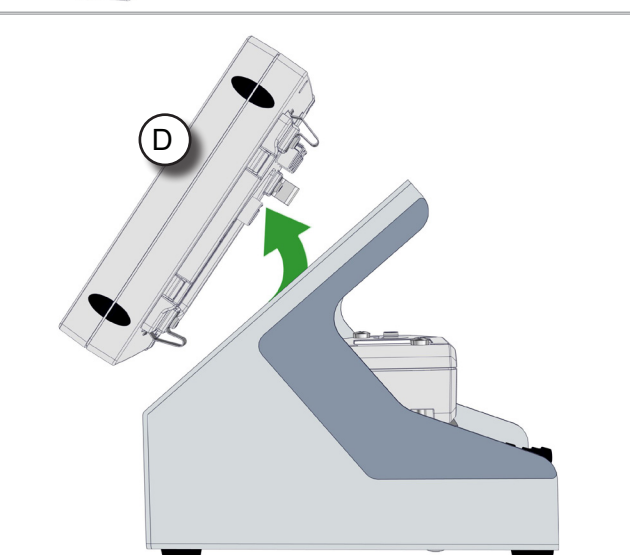
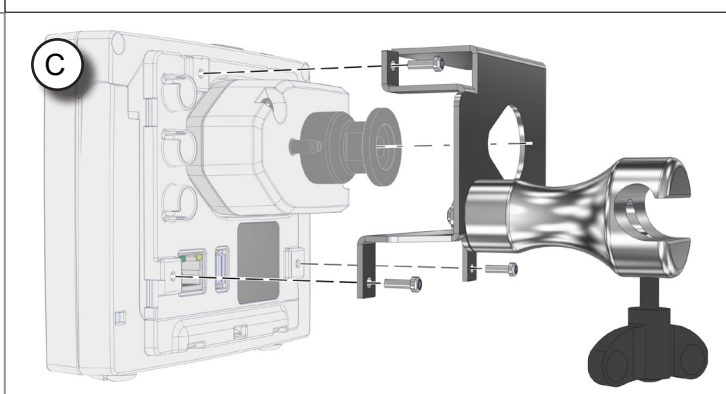
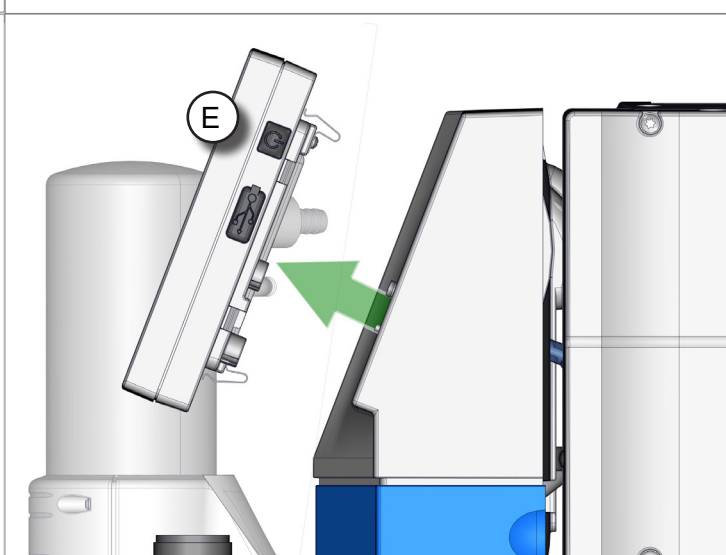


**NOTE**

These assembly instructions describe how to disassemble the components of a controller of the type VACUU·SELECT for correct disposal of the device and how to replace spare parts.

⇒ In addition, please refer to the safety information in the controller manual.


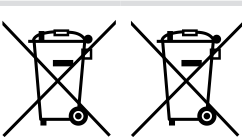

Spare parts suitable for the following controller types (examples)

		Controller	Order no.
	A	VACUU·SELECT with sensor	20700000
	B	VACUU·SELECT Complete built-in version	20700060
		VACUU·SELECT built-in version	20700061
	C	VACUU·SELECT Complete lab scaffold version	20700080
		VACUU·SELECT lab scaffold version	20700070
	D	VACUU·SELECT Complete bench-top version	20700070
	E	VACUU·SELECT operating panel	20635118
			
			

Spare parts

Spare part	Order no.
VACUU·SELECT Housing front with display	20638499
VACUU·SELECT Rear housing	20638498

Description of safety symbols

	Disconnect power plug.		Electric/electronic devices and batteries must not be disposed of in the domestic waste at the end of their service life.
	Electrostatically sensitive components ESD.		

Target group and personnel qualification

Qualified electrician	Person who, due to their technical training and knowledge of electrical and electronic equipment, can assess the work assigned to them and recognize any potential hazards.
Electrically trained person	Person who has been sufficiently trained by a qualified electrician with regard to the tasks assigned to them, the potential hazards of improper handling as well as the necessary protection equipment and protective measures that may be required.

Description of action symbols

	Steps		Position marker		Direction of movement
	Intermediate result or final result				Direction of rotation

Preparation: materials and tools



-> Examples, not part of delivery

- | | |
|---|--|
| 1 | ESD tweezers |
| 2 | Grounding wristband |
| 3 | ESD Torx screwdriver with torque of TX10 |
| 4 | Phillips screwdriver, size 2 |
| 5 | Flat-head screwdriver, size 5.5 |
| 6 | VACUU·SELECT controller |
| 7 | Protective gloves (optional) |

Replacing spare parts

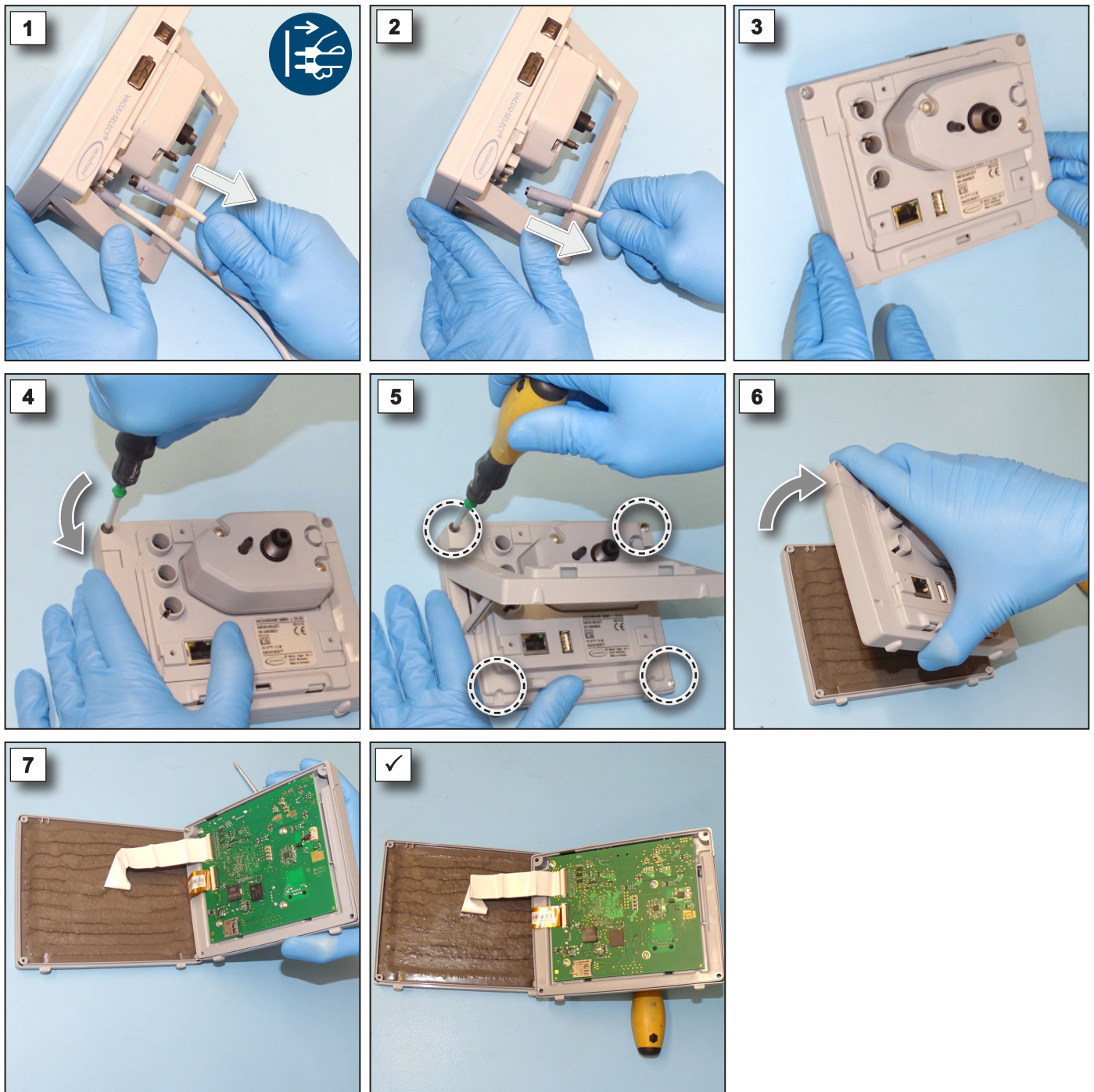
NOTE

Ensure that work is performed correctly in order to prevent damage from occurring.

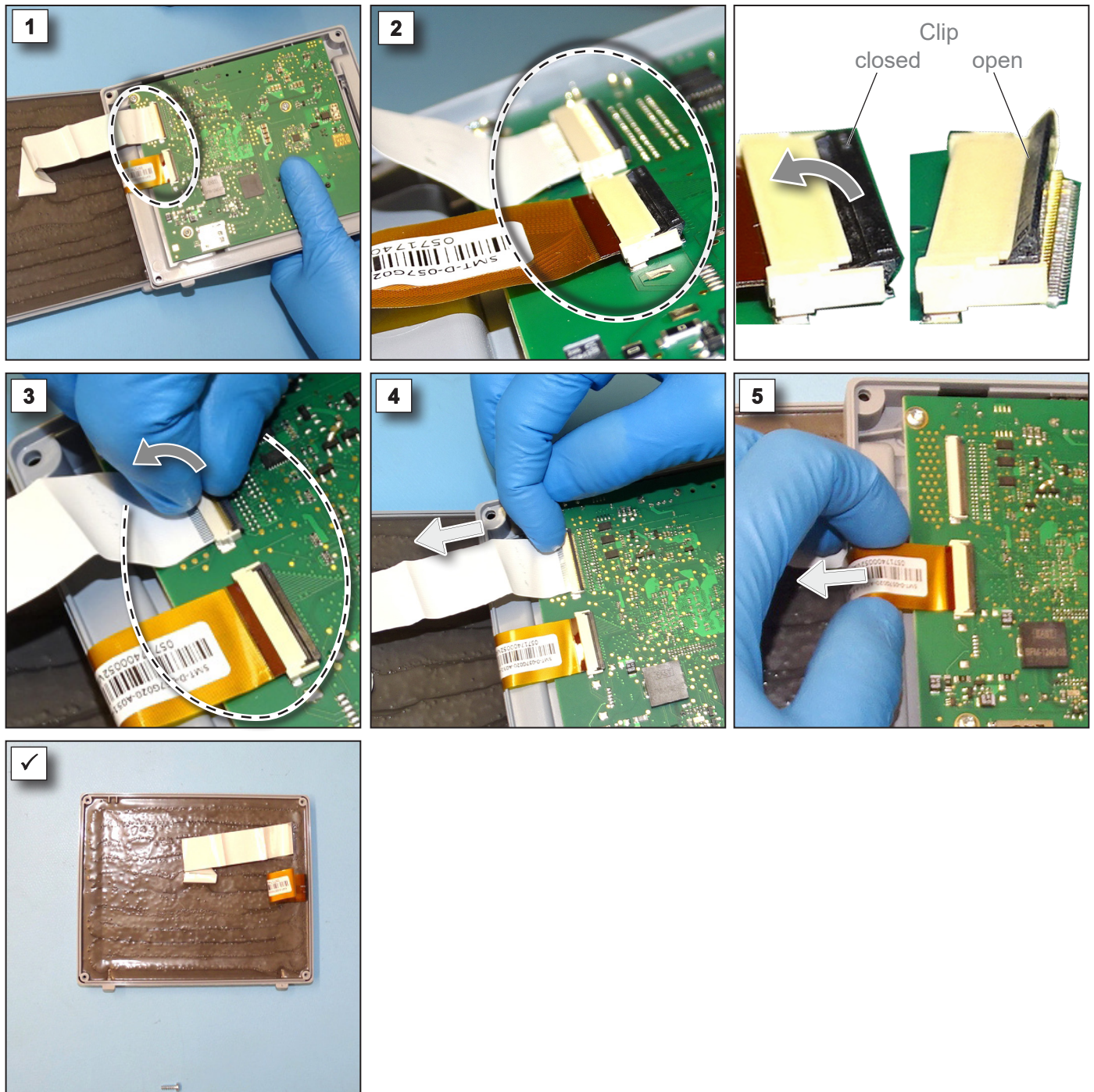


- ⇒ Have work on electrical and electronic equipment only performed by a qualified electrician or at least by a electrically trained person.
- ⇒ Ensure ESD safeguards when working with the circuit board.

Disassemble VACUU·SELECT



Disconnect flat ribbon cable



NOTE

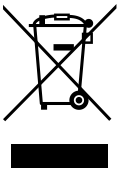
Electronic components must not be disposed of in domestic waste at the end of their service life. Incorrect disposal of electronic components can cause environmental pollution.

Used electronic devices contain harmful substances that can cause damage to the environment or human health. Disused electrical devices also contain valuable raw materials, which can be recovered for reuse if the device is disposed of correctly within the recycling process.

End users are legally obliged to take used electric and electronic devices to a licensed collection point.

⇒ Correctly dispose of all electronic scrap and electronic components at the end of their service life.

⇒ Observe the national regulations regarding disposal and environmental protection.



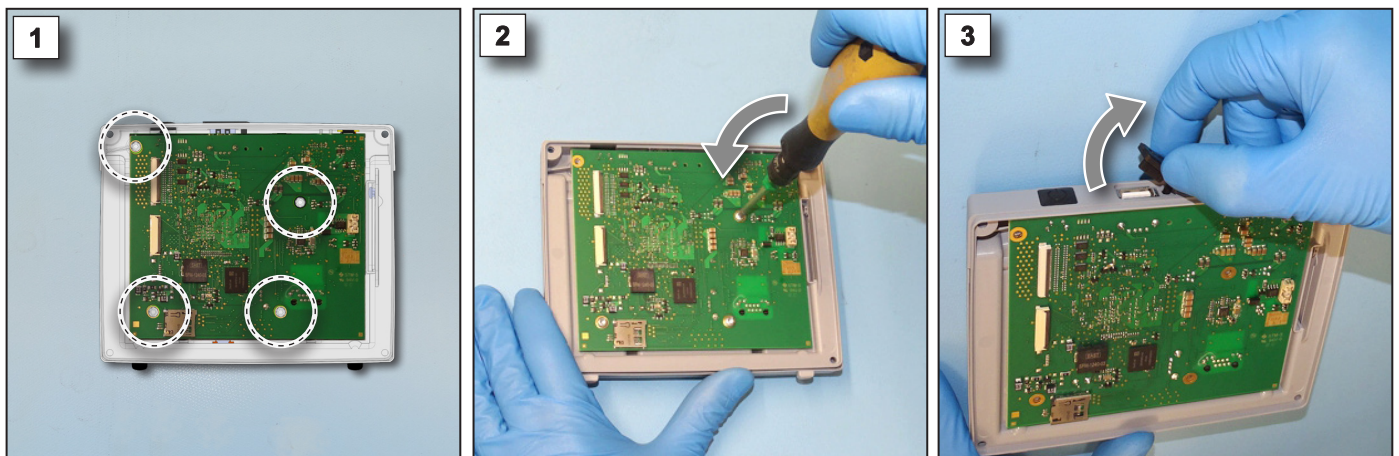
Replacement of housing front with display:

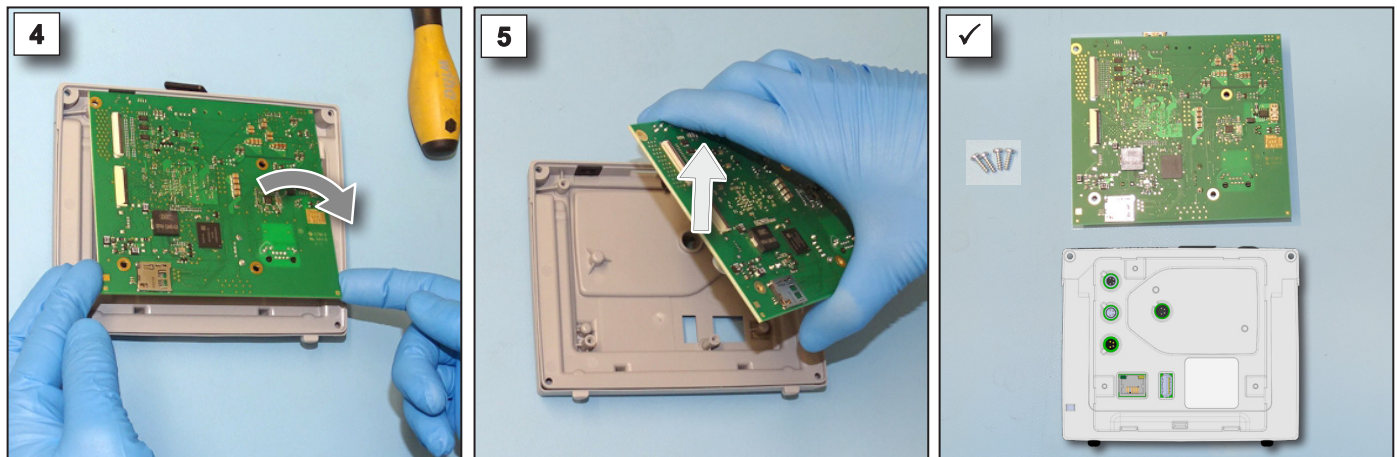
- see section „*Assemble housing front with display*“ on page 9 for next steps

Replacement of rear housing:

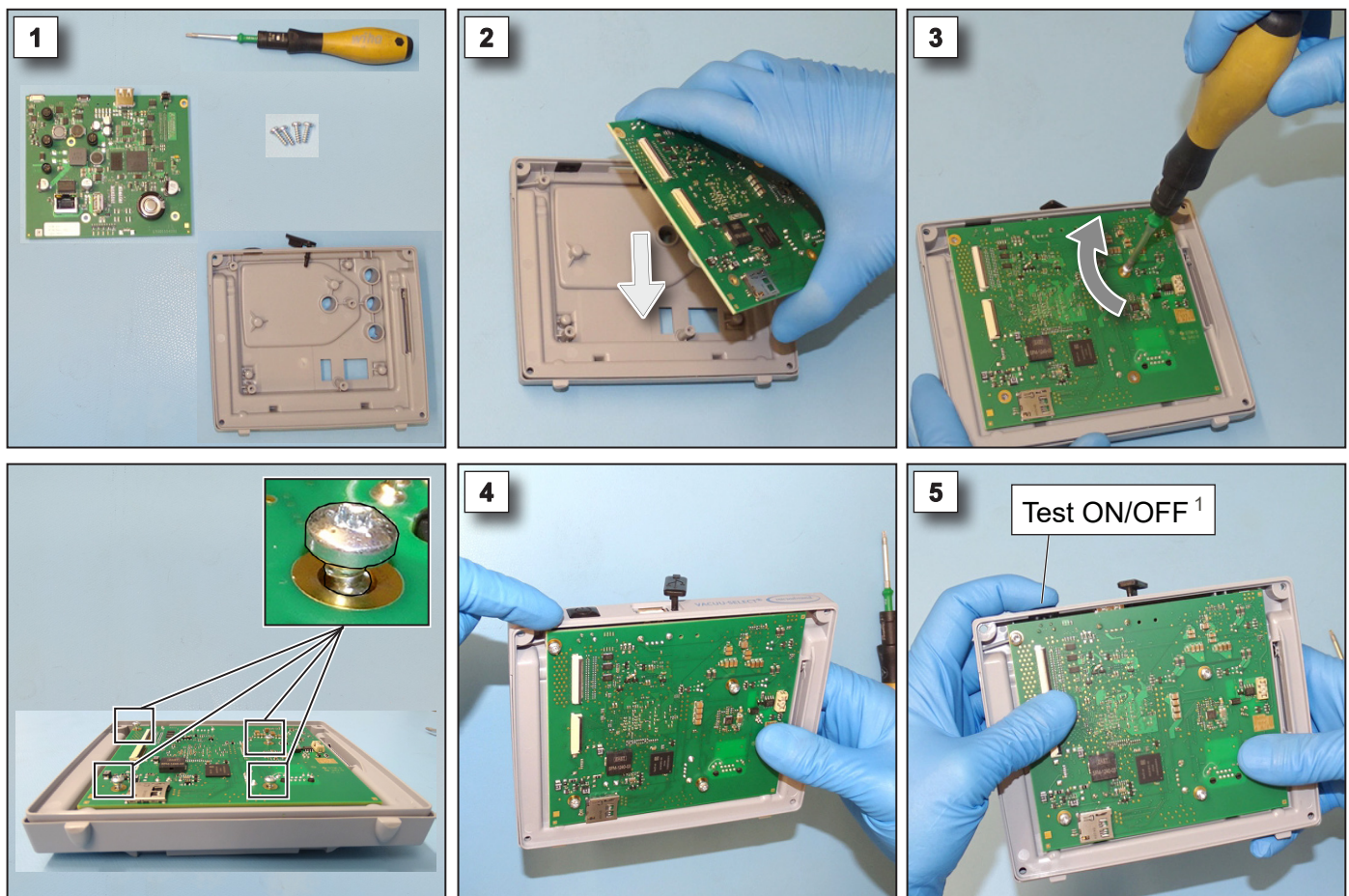
- see section „*Remove main circuit board*“ on page 6 for next steps

Remove main circuit board

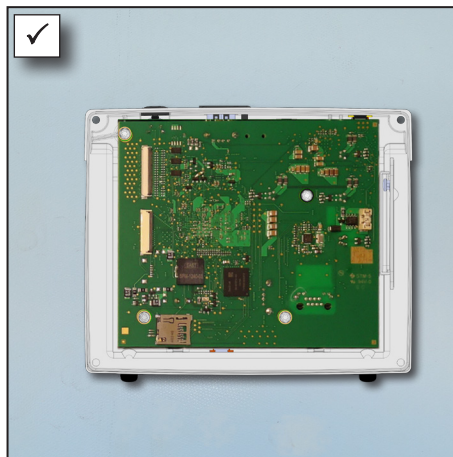
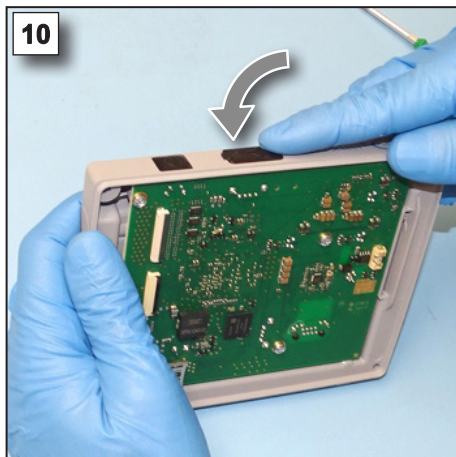
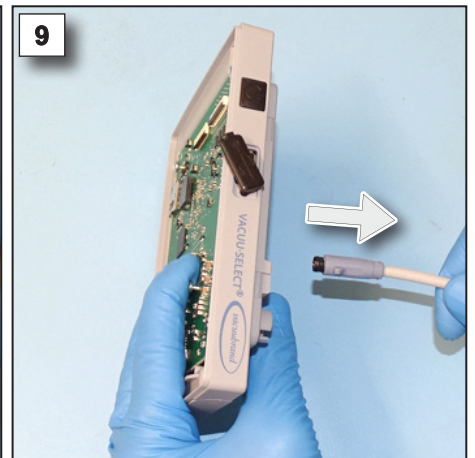
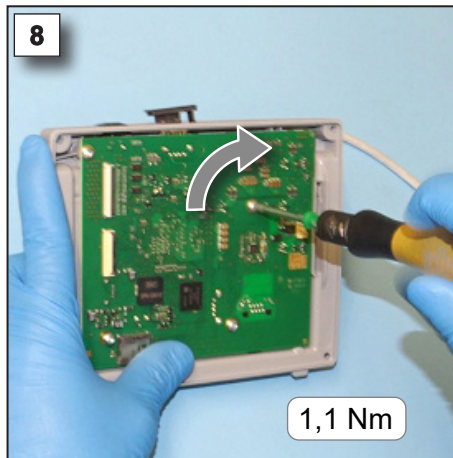
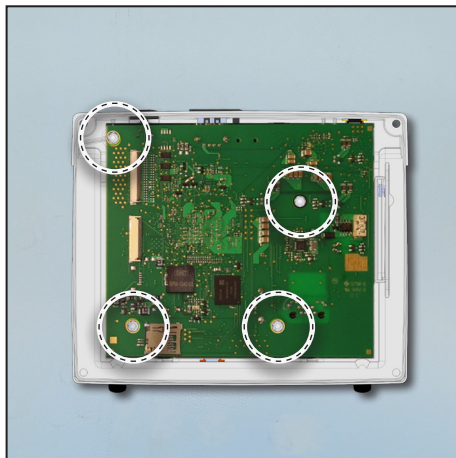
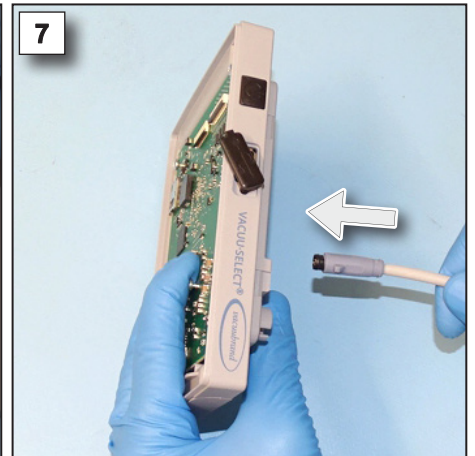
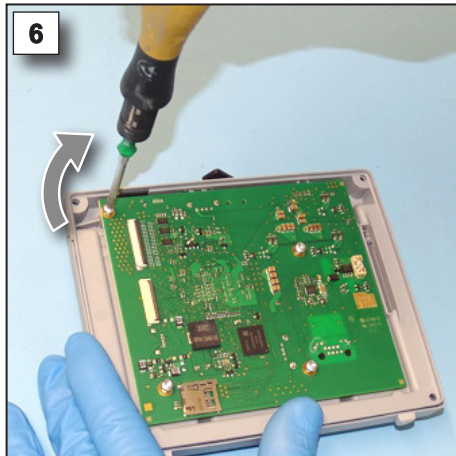




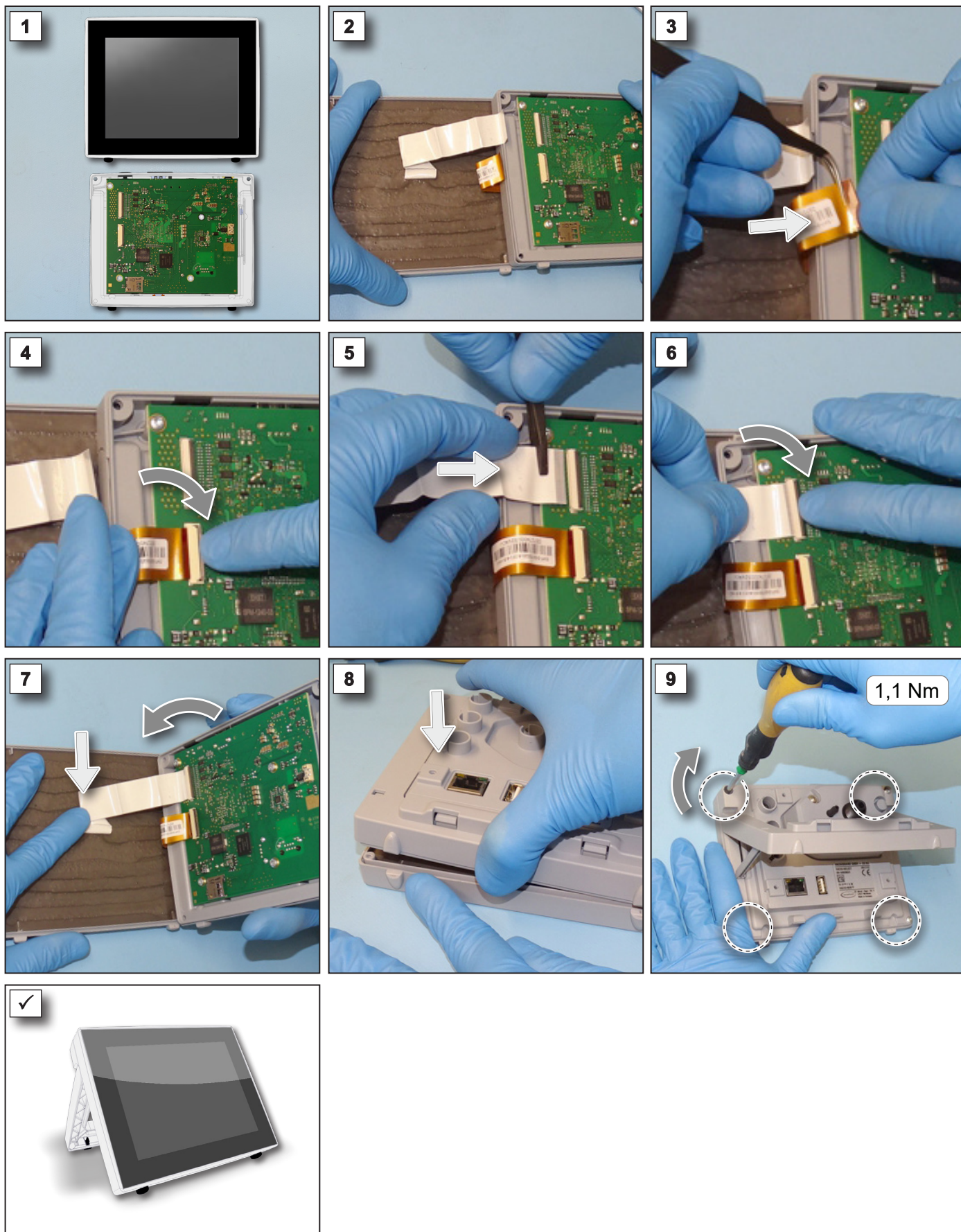
Install main circuit board into new rear housing



¹ -> A click must be audible when pressing the button.



Assemble housing front with display



Disassemble VACUU·SELECT controller for disposal

NOTE

Electronic components must not be disposed of in domestic waste at the end of their service life. Incorrect disposal of electronic components can cause environmental pollution.

Used electronic devices contain harmful substances that can cause damage to the environment or human health. Disused electrical devices also contain valuable raw materials, which can be recovered for reuse if the device is disposed of correctly within the recycling process.

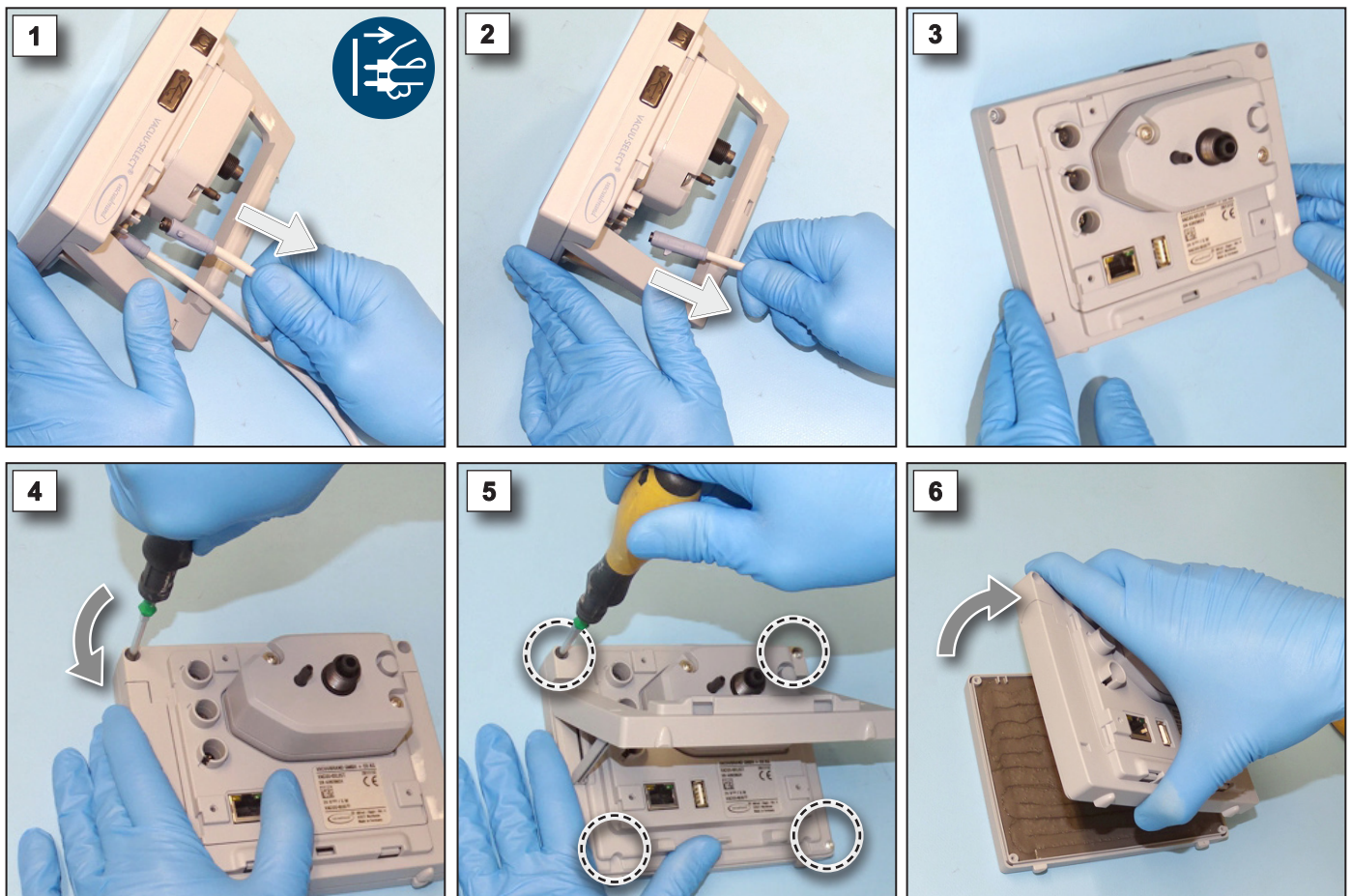
End users are legally obliged to take used electric and electronic devices to a licensed collection point.

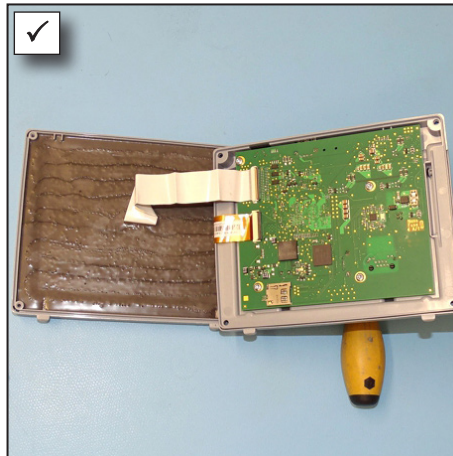
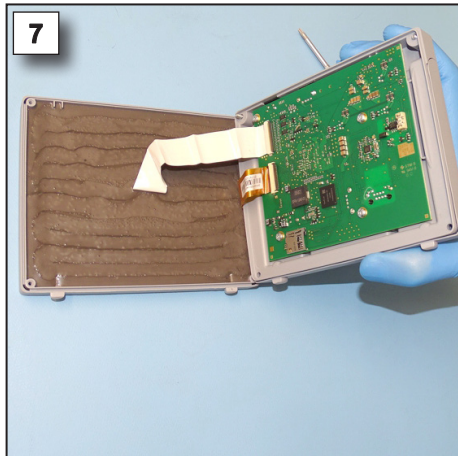
⇒ Correctly dispose of all electronic scrap and electronic components at the end of their service life.

⇒ Observe the national regulations regarding disposal and environmental protection.

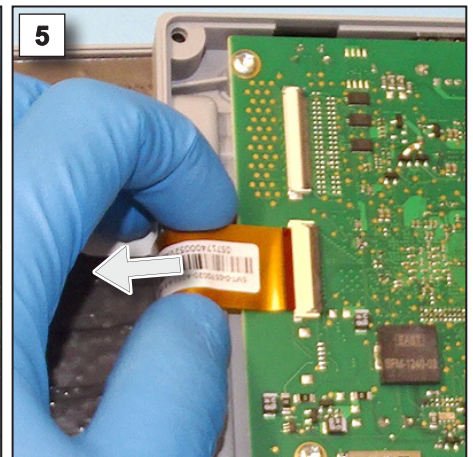
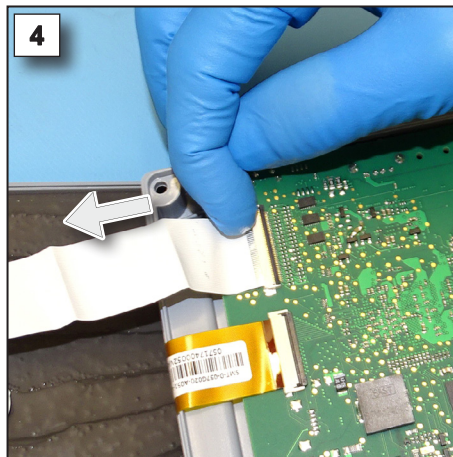
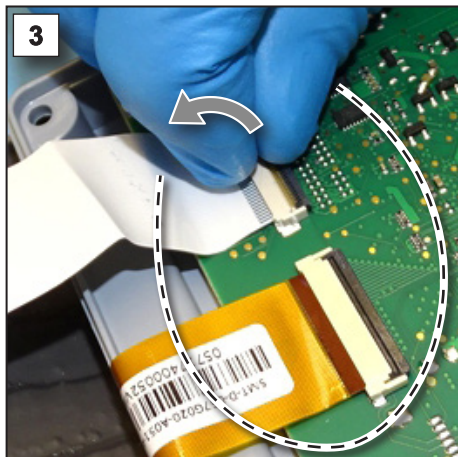
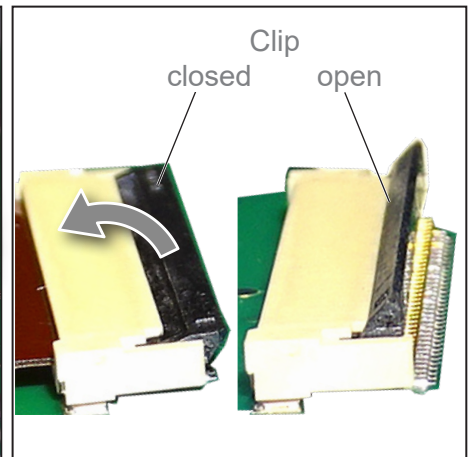
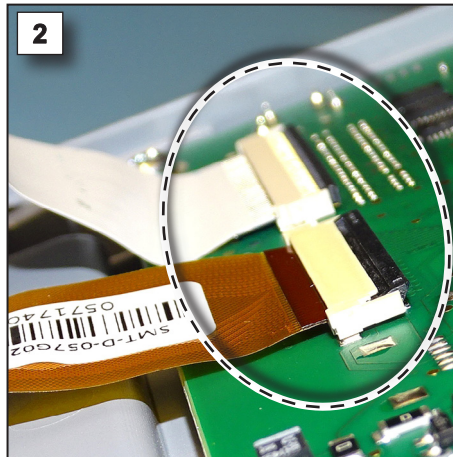
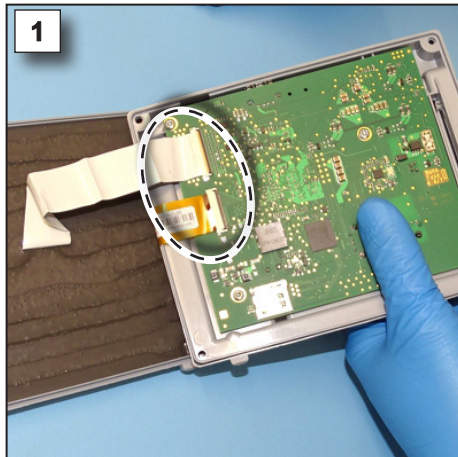


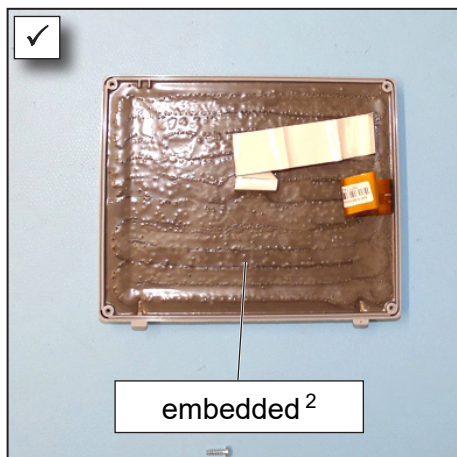
Disassemble VACUU·SELECT controller



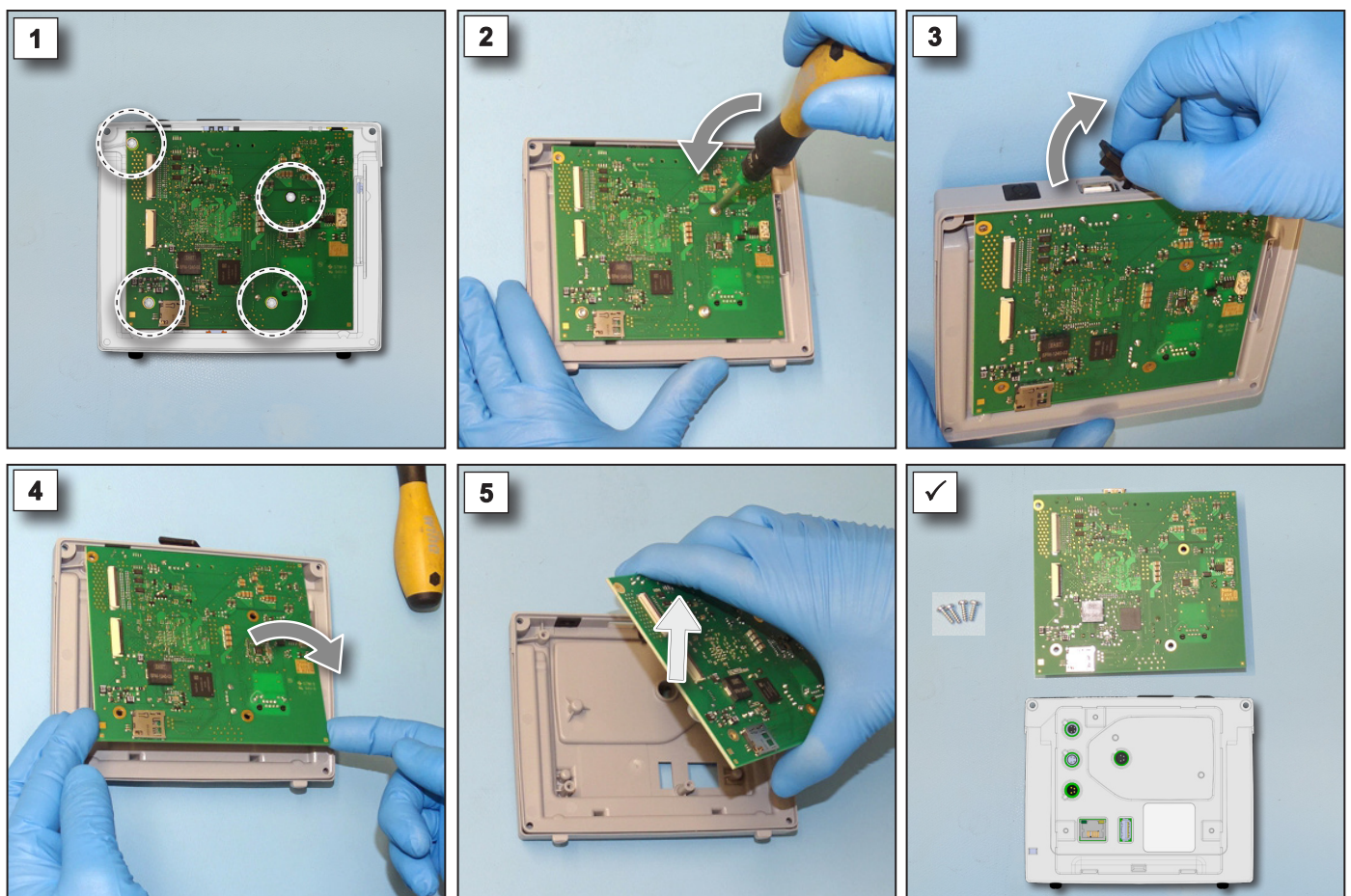


Disconnect flat ribbon cable





Remove main circuit board



2 -> no further disassembly of display possible.

Originalbetriebsanleitung Für künftige Verwendung aufbewahren!

Das Dokument darf nur vollständig und unverändert verwendet und weitergegeben werden. Es liegt in der Verantwortung des Anwenders, die Gültigkeit dieses Dokumentes bezüglich seines Produktes sicher zu stellen.

Hersteller:

**VACUUBRAND GMBH + CO KG
Alfred-Zippe-Str. 4
97877 Wertheim
GERMANY**

Tel.:

Zentrale: +49 9342 808-0

Vertrieb: +49 9342 808-5550

Service: +49 9342 808-5660

Fax: +49 9342 808-5555

E-Mail: info@vacuubrand.com

Web: www.vacuubrand.com